

# COUNTRY CLUB ESTATES

65-39

A SUBDIVISION OF PART OF THE  
N. 1/2 N.W. 1/4 SECTION 16, T-1N, R-5E, G. & S.R.B. & M.  
MARICOPA COUNTY, ARIZONA.

KNOW ALL MEN BY THESE PRESENTS, that the Phoenix Title and Trust Company, a corporation organized under the laws of the State of Arizona, has subdivided under the name of COUNTRY CLUB ESTATES that part of the N. 1/2 N.W. 1/4 SECTION 16, T-1N, R-5E, G. & S.R.B. & M., Maricopa County, Arizona, described as follows:

Beginning at a point on the West line of said section 16 1600 ft North of the SW corner of said N. 1/2 N.W. 1/4 section 16, said point being the NW corner of Country Club Village, a subdivision of record in the office of the County Recorder of Maricopa County, Arizona in Book 64 of Maps at page 50 thereof, thence North (assumed Bearing) along said West line 440.36 ft to a point which lies 100.00 ft South of the NW corner of said section 16, thence East 440.00 ft to a point, thence N 57° 35' 03" E 1065.75 ft to a point which lies 184.65 ft South of the North line of said section 16, thence North 184.65 ft to a point on said North line which lies N 88° 01' 53" E 937.54 ft from the said NW corner, thence N 88° 01' 53" E 502.35 ft along said North line to a point, thence S 0° 11' 12" E 250.00 ft to a point, thence along a curve to the right which has a radius of 1236.93 ft, a central angle of 23° 20' 24" and a length of 303.33 ft, thence along a curve to the left to a point on the North line of said Country Club Village, said curve having a radius of 1236.93 ft, a central angle of 20° 30' 48" and a length of 447.85 ft, thence N 88° 01' 56" W 142.78 ft along the North line of said Country Club Village to the point of beginning and hereby publish this plat as and for the plat of said COUNTRY CLUB ESTATES, and further declares that this plat sets forth the location and gives the measurements and dimensions of the lots, streets and alleys constituting same on said plat and each lot and each street shall be known by the number or name given to each respectively on said plat and the Phoenix Title and Trust Company, as trustee, hereby dedicates to the public for use as such the streets and alleys shown on this plat and included in the above described premises. The easements are dedicated for the purposes shown.

In Witness Whereof the Phoenix Title and Trust Company, as trustee, has this 19th day of November, 1955 hereunto caused its corporate name to be signed and its corporate seal to be affixed by the undersigned officers hereunto duly authorized:

PHOENIX TITLE AND TRUST COMPANY, TRUSTEE

By: J. S. Hull  
Vice President

Attest: J. S. Hull  
Assistant Secretary



State of Arizona }  
County of Maricopa }  
On this 19th day of November, 1955 before me, the undersigned officer personally appeared J. S. Hull and J. S. Hull, who acknowledged themselves to be the Vice-President and Assistant Secretary, respectively, of the Phoenix Title and Trust Company, a corporation, and that they as such officers respectively, being duly authorized so to do, executed the foregoing instrument for the purpose therein contained by signing the name of the corporation, as trustee, by themselves as such officers respectively.

In Witness Whereof I hereunto set my hand and official seal.

J. S. Hull  
Notary Public

Commission Expires APRIL 2, 1956

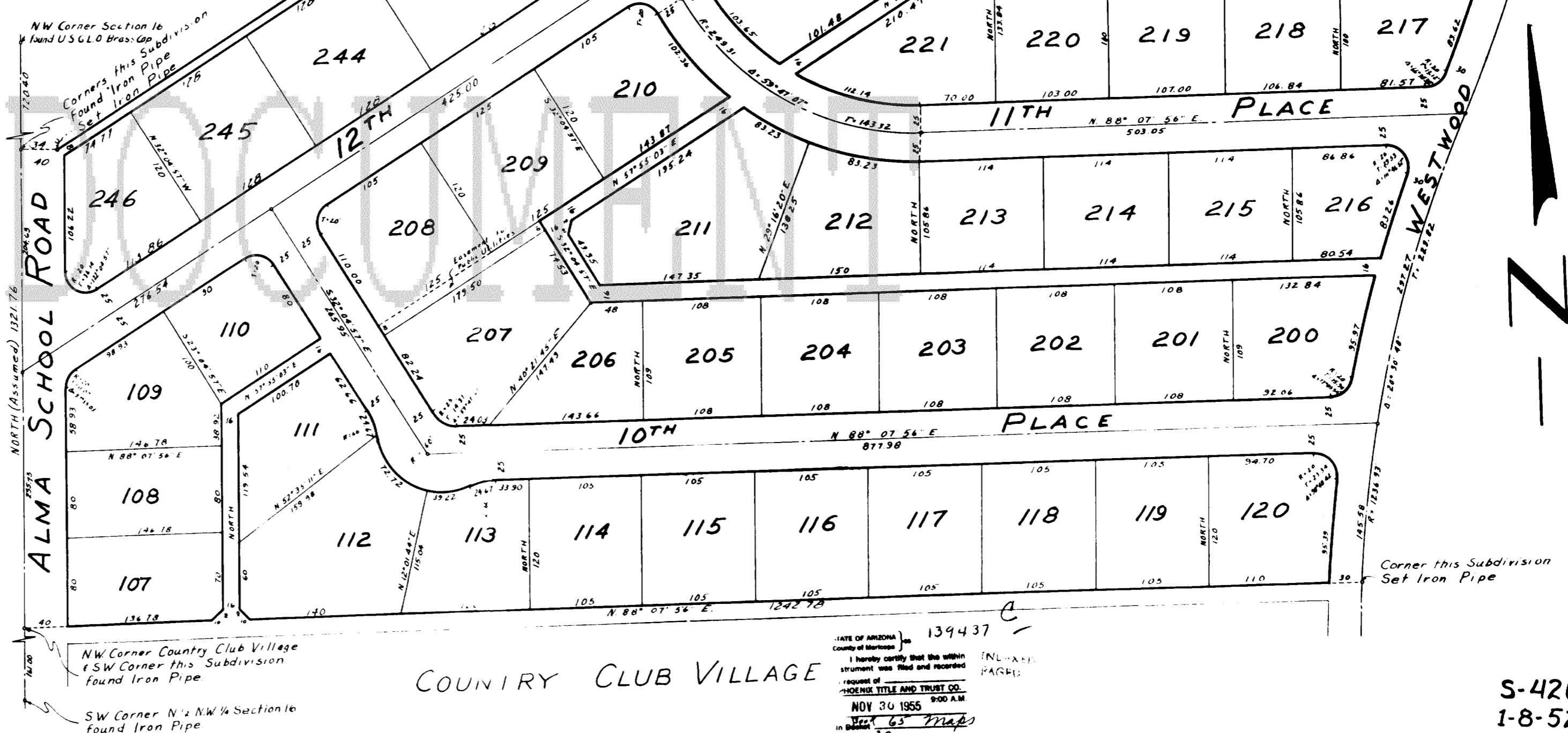
This is to certify that the survey and subdivision of the above described premises was made under my direction during the month of March, 1955.

R. S. Knight  
Registered Civil Engineer



Approved by the Maricopa County Planning and Zoning Commission this 4th day of May, 1955

R. R. McGuire  
Director



COUNTRY CLUB VILLAGE

STATE OF ARIZONA  
County of Maricopa  
I hereby certify that the within instrument was filed and recorded in Book 65 Maps at page 39 on this 30th day of November, 1955 at 9:00 A.M. in the office of the County Recorder. Witness my hand and official seal this 30th day of November, 1955.  
Edmund J. Leary  
County Recorder  
Deputy Recorder

139437  
S-420  
1-8-52  
SCOTTSDALE ENGINEERING COMPANY  
118 N. Brown Ave., Scottsdale, Ariz.  
Scale: 1" = 60'  
M.C.P.E. No. 422  
Job No. 2022